


☐

I'm not robot


reCAPTCHA

I'm not robot!

Elkay ezfstl8 1f manual

Elkay ezfs8 1h manual. Elkay ezfs8 1f manual. Elkay ezfstl8 1e manual. Elkay ezfs8 1e manual.

Elkay EZSTL8WSLK Description One of the most popular models, the Elkay EZSTL8WSLK Water Bottle Filling Station makes drinking water more practical, safe, and appealing than ever before.

The Elkay bi-level drinking fountain is a wall-mounted, refrigerated unit that includes a bottle filler and two drinking fountains. This model has a Granite Gray color finish. The EZSTL8WSLK’s drinking fountain features a Flexi-Guard bubbler protected by a flexible antimicrobial mouth guard that helps to protect against injury and microorganisms. The EZSTL8WSLK is a versatile model. You can choose which of the left or right fountains you want to be the higher, and which of the two will carry the bottle filler allowing greater installation flexibility. ADA compliant design Sanitary bottle fill created from hands-free sensor activation and recessed spout with 20 second auto shut-off system. Quick fill rate of 1.1 Gallons Per Minute Green Ticker™ tracks number of plastic bottles saved from waste. VIEW SPEC SHEET HERE: Elkay EZSTL8WSLK FILTERED? NO COOLER CABINET FINISH Light Gray Granite POWER 115V/60Hz BUBBLER OPTION FlexiGuard StreamSaver MOUNTING DETAILS Wall Mount (On-Wall) CHILLING DETAILS 8 GPH Elkay EZSTL8WSLK INSTALLATION LOCATION INDOOR NUMBER OF FOUNTAINS Two fountains DIMENSIONS L: 36-3/4" W: 19" H: 39-1/16" SHIPPING WEIGHT 89 lbs Elkay EZSTL8WSLK PRODUCT COMPLIANCE GreenSpec ADA Compliant CAN/CSA 22.2 120 ASME A112.19.3/CSA B45.4 Buy American Act UL 399 NSF 61 NSF 372 (no lead) Elkay EZSTL8WSLK Includes Water Bottle Filling Station Warranty Refrigeration System (IF APPLICABLE) Elkay EZSTL8WSLK refrigeration system includes 5 year limited warranty. Electrical Parts & Water System Elkay EZSTL8WSLK warranty for electrical parts and water system is valid 18 months from the factory shipment or 12 months from the date of installation. The warranty will honor which ever date falls first. View more warranty details here Installation Notes Elkay EZSTL8WSLK requires installation from licensed plumber. Email us at support@bottlefillingstations.com to be connected to our network of Bottle Filler installation professionals. Requires access to electrical connection.

Product also includes physical copy of installation instructions in package. View detailed Elkay EZSTL8WSLK MANUAL. Maintenance Cleaning It is recommended to use soft cloth and mild dishwashing soap to spray and wipe down the unit. Routine cleaning is also suggested. Filter Replacement (IF APPLICABLE) When filter status light turns to red, the filter needs to be changed.

Follow these steps: 1) Remove the bottom access panel. 2) Unplug unit 3) Unscrew old filter 4) Install new WaterSentry Plus filter. 5) Reset filter light back to green by removing top cover and pressing the black reset button. Select reset filter.

The light should appear as green. Detailed instructions on filter light reset are included in produce package. View VIDEO of CLEANING, FILTER REPLACEMENT, & FILTER LIGHT RESET instructions. FAQ Q: What is included in the Cooler Combo? A: The Cooler Combo Bottle Filling Stations includes both the Bottle Filler and Water Cooler, which will be delivered in two separate boxes. Q: Does the shipment include everything for the installation? Does plumber need anything else? A: Does not include: Shut-off Valve (not furnished) 1-1/4" Trap (not furnished). Q: Does this product come with a Mounting Frame? A: Cooler Combos come with Hanger Brackets, which are adequate for almost every setup. If more structural integrity is needed, the In-Wall Carrier Mounting Frame (MLP200) can be ordered separately. Please find further details on Spec Sheet and/or Installation Instructions. Q: Is there a better, more updated model series available? A: Yes, the latest model series is the Enhanced line, which includes improvements such as easier maintenance. View the Enhanced line HERE. *MADE IN THE UNITED STATES. Experience the benefits of the very popular Elkay EZSTL8WSLK Water Bottle Filling Station. Best Support, Fast Shipping, & Low Prices. CONTACT US NOW! data-bread-crumbs=Backorder: 10+ weeks;Brand:Elkay;Bubbler Option:Flexiguard Safety;Category:Cooler Combo;Display bulk order icon;Els PW 13032;ezH2O Original;Features:Bi-Level;Finish:Light Gray Granite;Fountain Style:EZ;Installation Location:Indoor;Mounting Option:Wall Mount(on-wall);Number of Stations:Two;Power:115V/60Hz;Refrigeration:Chilled;> Elkay water chillers provide 50 degree drinking water and meet Federal and State low-lead requirements Looking to purchase several units, please contact us for a custom discounted bulk order quote! Description Downloads Shipping Installation Warranty Maintenance One of the most popular models, theElkay EZSTL8WSLK Water Bottle Filling Station makes drinking water more practical, safe, and appealing than ever before. The Elkay bi-level drinking fountain is a wall-mounted, refrigerated unit that includes a bottle filler and two drinking fountains.

This model has a Granite Gray color finish. The EZSTL8WSLK’s drinking fountain features a Flexi-Guard bubbler protected by a flexible antimicrobial mouth guard that helps to protect against injury and microorganisms. The EZSTL8WSLK is a versatile model. You can choose which of the left or right fountains you want to be the higher, and which of the two will carry the bottle filler allowing greater installation flexibility. ADA compliant design Sanitary bottle fill created from hands-free sensor activation and recessed spout with 20 second auto shut-off system. Quick fill rate of1.1 Gallons Per Minute Green Ticker™ tracks number of plastic bottles saved from waste. VIEW SPEC SHEET HERE: Elkay EZSTL8WSLK FILTERED? NO COOLER CABINET FINISH Light Gray Granite POWER 115V/60Hz BUBBLER OPTION FlexiGuard StreamSaver MOUNTING DETAILS Wall Mount (On-Wall) CHILLING DETAILS 8 GPH Elkay EZSTL8WSLK INSTALLATION LOCATION INDOOR NUMBER OF FOUNTAINS Two fountains DIMENSIONS L: 36-3/4" W: 19" H: 39-1/16" SHIPPING WEIGHT 89 lbs Elkay EZSTL8WSLK PRODUCT COMPLIANCE GreenSpec ADA Compliant CAN/CSA 22.2 120 ASME A112.19.3/CSA B45.4 Buy American Act UL 399 NSF 61 NSF 372 (no lead) Elkay EZSTL8WSLK Includes Water Cooler Water Bottle Filling Station Warranty Refrigeration System (IF APPLICABLE) Elkay EZSTL8WSLK refrigeration system includes 5 year limited warranty.



Electrical Parts & Water System Elkay EZSTL8WSLK warranty for electrical parts and water system is valid 18 months from the factory shipment or 12 months from the date of installation. The warranty will honor which ever date falls first. View more warranty details here Installation Notes Elkay EZSTL8WSLK requires installation from licensed plumber. Email us at support@bottlefillingstations.com to be connected to our network of Bottle Filler installation professionals. Requires access to electrical connection. Product also includes physical copy of installation instructions in package. View detailed Elkay EZSTL8WSLK MANUAL. Maintenance Cleaning It is recommended to use soft cloth and mild dishwashing soap to spray and wipe down the unit. Routine cleaning is also suggested.

Filter Replacement (IF APPLICABLE) When filter status light turns to red, the filter needs to be changed. Follow these steps: 1) Remove the bottom access panel. 2) Unplug unit 3) Unscrew old filter 4) Install new WaterSentry Plus filter. 5) Reset filter light back to green by removing top cover and pressing the black reset button. Select reset filter.

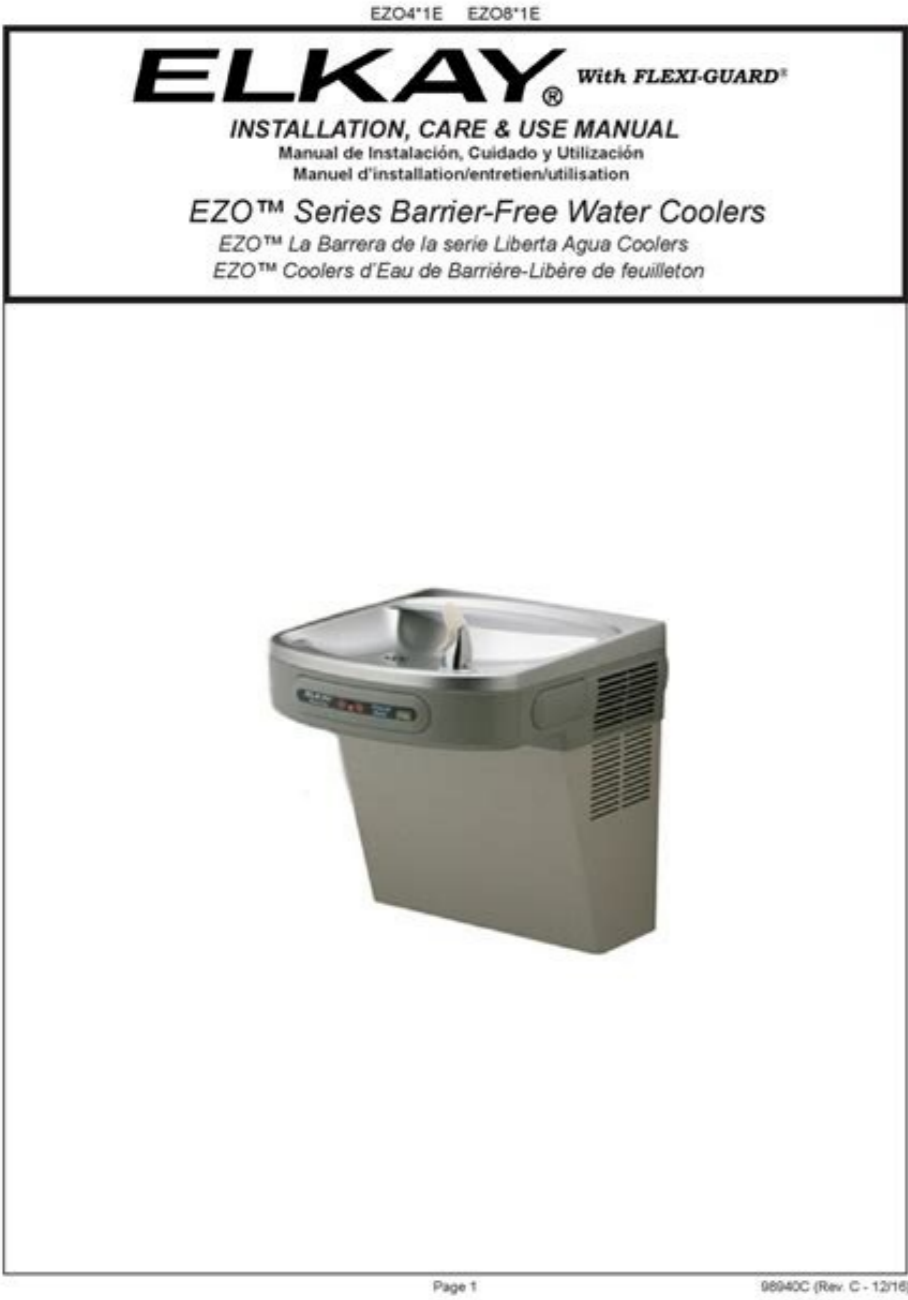
The light should appear as green. Detailed instructions on filter light reset are included in produce package. View VIDEO of CLEANING, FILTER REPLACEMENT, & FILTER LIGHT RESET instructions. FAQ Q: What is included in the Cooler Combo? A: The Cooler Combo Bottle Filling Stations includes both the Bottle Filler and Water Cooler, which will be delivered in two separate boxes. Q: Does the shipment include everything for the installation? Does plumber need anything else? A: Does not include: Shut-off Valve (not furnished) 1-1/4" Trap (not furnished). Q: Does this product come with a Mounting Frame? A: Cooler Combos come with Hanger Brackets, which are adequate for almost every setup. If more structural integrity is needed, the In-Wall Carrier Mounting Frame (MLP200) can be ordered separately. Please find further details on Spec Sheet and/or Installation Instructions.

Q: Is there a better, more updated model series available? A: Yes, the latest model series is the Enhanced line, which includes improvements such as easier maintenance. View the Enhanced line HERE. *MADE IN THE UNITED STATES. Experience the benefits of the very popular Elkay EZSTL8WSLK Water Bottle Filling Station. Best Support, Fast Shipping, & Low Prices.CONTACT US NOW! All orders in Continental U.S. over \$7,000 qualify for FREE Shipping. NOTE: Free Shipping only applies to the product(s), not installation sales. Exceptions may apply to islands and other remote territories. All orders shipped by the carrier of our choice. Standard shipping Standard shipping rates DO NOT include inside delivery and/or lift gate services. By selecting Standard Shipping, you are hereby declining these extra services. *Note: If you are a school, and you select Standard Shipping, you are hereby declaring that you either have a receiving dock for deliveries, or you are able to get the package off of the truck yourself. Appointment required for all school deliveries. Premium shipping Premium shipping rates DO include inside delivery and/or lift gate services. Premium shipping is only available for freight deliveries (those that have refrigerated units, or some very large orders without refrigerated units). **Note: If Standard Shipping is selected at time of purchase, and inside delivery is requested of the carrier by the consignee at time of delivery, an additional fee will be charged, and the consignee will be responsible. Rates Shipping fees vary depending on the state and order size. Standard shipping rates are described below. *Premium shipping is also available on freight deliveries (those with refrigerated units, or some very large non-refrigerated orders). Premium rates are an extra \$65 in addition to the Standard rate, and include inside delivery and lift gate service.

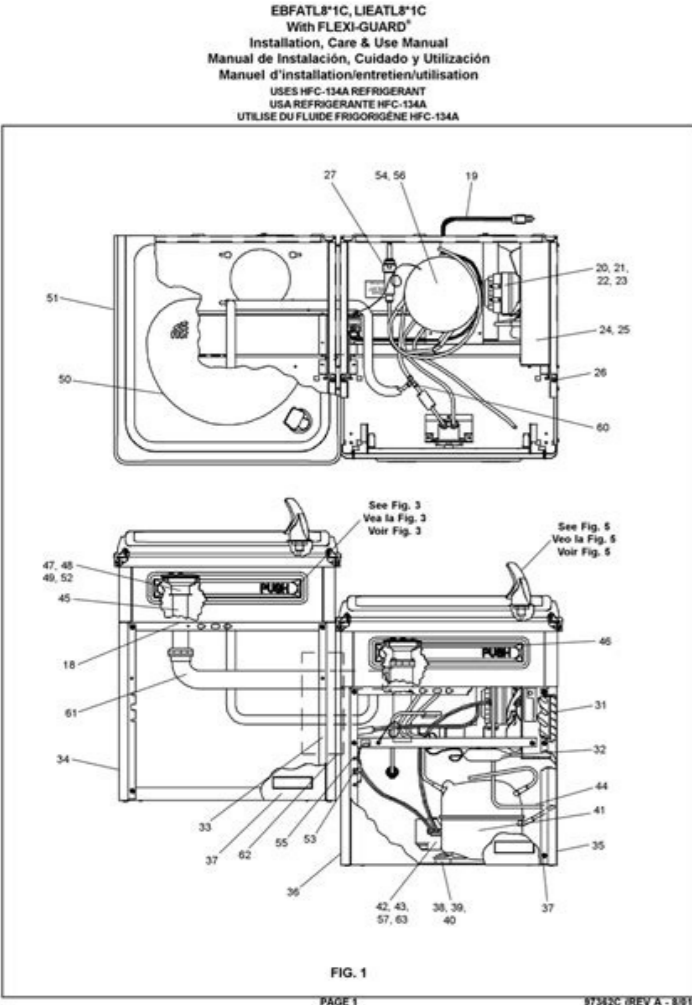


Please note that shipping rates are subject to change at any time. We reserve the right to charge an additional fee in addition to the regularly advertised shipping fee for shipping to remote areas not easily accessible by typical freight carrier means (i.e. islands only accessible by ferry). If your order falls into this category, you will be notified upon receipt of your order, and have the option to complete the purchase with additional fee or to cancel the order. Please note, these instances are very rare, as most locations are reachable by regular freight. If you have any questions, please contact us! Shipping rate tiers: Tier 1: Filters/Parts/Non-chilled units orders under \$1,500 Tier 2: Filters/Parts/Non-chilled units orders between \$1,500 and \$6,999 Tier 3: Chilled units/Outdoor tubular units under \$ 7,000 States Tier 1 Tier 2 Tier 3 AR, AL, MS, GA, FL, SC, LA, TN \$29.90 \$59.90 \$179.90 NC, VA, WV, DC, MD, DE \$29.90 \$74.90 \$179.90 NJ, PA, NY, CT \$29.90 \$59.90 \$179.90 MA, VT, NH, ME, RI \$29.90 \$59.90 \$149.90 MI, OH, KY, IN, IL, MO, IA, MN, WI \$29.90 \$34.90 \$149.90 KS, NE, SD, ND \$29.90 \$34.90 \$179.90 OK, TX \$29.90 \$59.90 \$199.90 NM, AZ, UT, CO \$39.90 \$74.90 \$209.90 WY, MT, ID \$39.90 \$59.90 \$209.90 WA, OR \$39.90 \$74.90 \$209.90 CA, NV \$39.90 \$74.90 \$209.90 Fountains and Bottle Fillers require installation from licensed plumber. Complete this form to be connected to our network of installation professionals. Requires access to electrical connection.

Product also includes physical copy of installation instructions in package. Refrigeration System (IF APPLICABLE): Elkay's refrigeration system includes 5-year limited warranty. Electrical Parts & Water System: Elkay's warranty for electrical parts and water system is valid 18 months from the factory shipment or 12 months from the date of installation. The warranty will honor whichever date falls first. View more warranty details here. It is recommended to routinely clean your Bottle Filling Station with a soft cloth and mild dishwashing soap to spray and wipe down the unit. It is also recommended to clean the flexible fill mat. Remove the four screws to wipe beneath and on top of the fill mat. Video on Cleaning Video on Fill Mat Filter Replacement When filter status light turns to red, the filter needs to be changed. Here are some detailed instructions. Video on Filter Change Description Downloads Shipping Installation Warranty Maintenance Filter The Elkay LZSTL8WSLP is a wall-mounted, refrigerated unit that includes a bottle filler and two drinking fountains. This model has a Granite Gray color finish. One of the most popular models, the Elkay LZSTL8WSLP Water Bottle Filling Station makes drinking water more practical, safe, and appealing than ever before. The Elkay LZSTL8WSLP is a versatile model.



You can choose which of the left or right fountains you want to be the higher, and which of the two will carry the bottle filler allowing greater installation flexibility. The Elkay LZSTL8WSLP drinking fountains feature a Flexi-Guard bubbler protected by a flexible antimicrobial mouth guard that helps to protect against injury and microorganisms. Being an 'Enhanced' EZH2o unit, the Elkay LZSTL8WSLP features a new visual monitor for the filter status light and the bottle counter. The 'Fillsafe recognition' technology allows the LZSTL8WSLP to automatically recognize new filters and to update the LED light back to green upon replacement. New LED Screen showcases Filter Status and Green Ticker™ that tracks each plastic bottle saved from waste. Easier Filter Replacement – filter light automatically resets upon replacement. Track Sustainability Impact with Green Ticker™ that tracks each plastic bottle saved from waste. Visually Appealing LED Light activates when bottle is full.



ADA compliant design Elkay LZSTL8WSLP resources: Enhanced Bi-level EZH2o Installation: Elkay EZH2o Filter change: Elkay EZH2o Care & Cleaning FILTERED? YES COOLER CABINET FINISH Light Gray Granite Vinyl Clad Steel POWER 115V/60Hz BUBBLER OPTION FlexiGuard Safety MOUNTING DETAILS Wall Mount (On-Wall) CHILLING DETAILS 8 GPH Elkay LZSTL8WSLP INSTALLATION LOCATION INDOOR NUMBER OF STATIONS Single Station DIMENSIONS L: 36-3/4" W: 19" H: 39-1/2" SHIPPING WEIGHT 98 lbs Elkay LZSTL8WSLP PRODUCT COMPLIANCE GreenSpec ADA Compliant CAN/CSA 22.2 120 ASME A112.19.3/CSA B45.4 Buy American Act UL 399 NSF 61 NSF 53 NSF 42 NSF 372 (no lead) Elkay LZSTL8WSLP Includes Water Cooler Water Bottle Filling Station Filter Warranty Refrigeration System (IF APPLICABLE) Elkay LZSTL8WSLP refrigeration system includes 5 year limited warranty. Electrical Parts & Water System Elkay LZSTL8WSLP warranty for electrical parts and water system is valid 18 months from the factory shipment or 12 months from the date of installation. The warranty will honor which ever date falls first. View more warranty details here. Installation Notes Elkay LZSTL8WSLP requires installation from licensed plumber. Email us at support@bottlefillingstations.com to be connected to our network of Bottle Filler installation professionals. Requires access to electrical connection. Product also includes physical copy of installation instructions in package. View detailed Elkay LZSTL8WSLP MANUAL. Maintenance Cleaning It is recommended to use soft cloth and mild dishwashing soap to spray and wipe down the unit. Routine cleaning is also suggested. View VIDEO of CLEANING, FILTER REPLACEMENT, & FILTER LIGHT RESET instructions. FAQ Q: What new features have been added to the Enhanced Bottle Filling Stations? A: One of the main differences is the Energy Savings system, which can be set to power-off at certain times to lower electric bill. The systems also have new diagnostics built in the refrigeration system to track savings and help troubleshoot, if there is ever an issue. The filter replacement is much easier as the LED light automatically resets upon replacing the new filter. There are many new exciting features as well. View the Enhanced Bottle Filling Station OVERVIEW page here. Q: What type of Filter goes with the Enhanced Bottle Filling Station? How much does it cost? A: The Elkay 51300C WaterSentry Replacement Filter matches with the new Enhanced EZH2o Water Bottle Filling Station. We currently have the following replacement packs on SALE: 51300C 51300C 3PK 51300C 12PK 51300C 24PK 51300C 48PK Q: How long do filters last? A: The WaterSentry Filters have a 3,000 Gallon Capacity. Depending on usage and your water condition, this typically lasts from 6-12 months. It is recommended to replace filter at least once per year. Q: How long does delivery take? A: Lead time for the EZH2o Enhanced Bottle Filling Stations is 3-7 business days. Expedited shipping options are available. Contact us now. Q: Who can Install my Bottle Filling Station? A: Bottlefillingstations.com customers receive a free referral to a licensed professional in your area. Contact us now. Q: What maintenance is needed for the Water Bottle Filling Station? A: It is recommended to routinely clean your Bottle Filling Station with a soft cloth and mild dishwashing soap to spray and wipe down the unit. See video here (jump to 0:48 min) It is also recommended to clean the flexible fill mat. Remove the four screws to wipe beneath and on top of the mat. See VIDEO here (jump to 2:35 min). Avoid using steel soap pads. Q: What water pressure is needed for the Enhanced Bottle Filling Station? A: Single-level Bottle Filling Stations require 20 psi to 105 psi supply line pressure. *MADE IN THE UNITED STATES. Experience the benefits of the very popular Elkay LZSTL8WSLP Water Bottle Filling Station. Best Support, Fast Shipping, & Low Prices.CONTACT US NOW! All orders in Continental U.S. over \$7,000 qualify for FREE Shipping. NOTE: Free Shipping only applies to the product(s), not installation sales. Exceptions may apply to islands and other remote territories. All orders shipped by the carrier of our choice. Standard shipping Standard shipping rates DO NOT include inside delivery and/or lift gate services. By selecting Standard Shipping, you are hereby declining these extra services. *Note: If you are a school, and you select Standard Shipping, you are hereby declaring that you either have a receiving dock for deliveries, or you are able to get the package off of the truck yourself. Appointment required for all school deliveries. Premium shipping Premium shipping rates DO include inside delivery and/or lift gate services. Premium shipping is only available for freight deliveries (those that have refrigerated units, or some very large orders without refrigerated units). **Note: If Standard Shipping is selected at time of purchase, and inside delivery is requested of the carrier by the consignee at time of delivery, an additional fee will be charged, and the consignee will be responsible. Rates Shipping fees vary depending on the state and order size. Standard shipping rates are described below. *Premium shipping is also available on freight deliveries (those with refrigerated units, or some very large non-refrigerated orders). Premium rates are an extra \$65 in addition to the Standard rate, and include inside delivery and lift gate service. Please note that shipping rates are subject to change at any time. We reserve the right to charge an additional fee in addition to the regularly advertised shipping fee for shipping to remote areas not easily accessible by typical freight carrier means (i.e. islands only accessible by ferry). If your order falls into this category, you will be notified upon receipt of your order, and have the option to complete the purchase with additional fee or to cancel the order. Please note, these instances are very rare, as most locations are reachable by regular freight. If you have any questions, please contact us! Shipping rate tiers: Tier 1: Filters/Parts/Non-chilled units orders under \$1,500 Tier 2: Filters/Parts/Non-chilled units orders between \$1,500 and \$6,999 Tier 3: Chilled units/Outdoor tubular units under \$ 7,000 States Tier 1 Tier 2 Tier 3 AR, AL, MS, GA, FL, SC, LA, TN \$29.90 \$59.90 \$179.90 NC, VA, WV, DC, MD, DE \$29.90 \$74.90 \$179.90 NJ, PA, NY, CT \$29.90 \$59.90 \$179.90 MA, VT, NH, ME, RI \$29.90 \$59.90 \$149.90 MI, OH, KY, IN, IL, MO, IA, MN, WI \$29.90 \$34.90 \$149.90 KS, NE, SD, ND \$29.90 \$34.90 \$179.90 OK, TX \$29.90 \$59.90 \$199.90 NM, AZ, UT, CO \$39.90 \$74.90 \$209.90 WY, MT, ID \$39.90 \$59.90 \$209.90 WA, OR \$39.90 \$74.90 \$209.90 CA, NV \$39.90 \$74.90 \$209.90 Fountains and Bottle Fillers require installation from licensed plumber. Complete this form to be connected to our network of installation professionals. Requires access to electrical connection. Product also includes physical copy of installation instructions in package. Refrigeration System (IF APPLICABLE): Elkay's refrigeration system includes 5-year limited warranty. Electrical Parts & Water System: Elkay's warranty for electrical parts and water system is valid 18 months from the factory shipment or 12 months from the date of installation. The warranty will honor whichever date falls first. View more warranty details here. It is recommended to routinely clean your Bottle Filling Station with a soft cloth and mild dishwashing soap to spray and wipe down the unit. It is also recommended to clean the flexible fill mat. Remove the four screws to wipe beneath and on top of the mat. Video on Cleaning Video on Fill Mat Filter Replacement When filter status light turns to red, the filter needs to be changed. Here are some detailed instructions. Video on Filter Change Elkay Filters are... made with activated carbon to improve taste and odor, as well as clarity, easy to connect and are self-contained replaceable cartridges, limiting exposure to contaminated media. equipped with Quick-Disconnect, 1/4 turn installation, as well as automatic inlet shut-off valve that closes when filter is removed. available in retro-fit kits and/or remote filtering models American Made What do the filters remove? The WaterSentry Plus filters used in the Elkay and Halsey Taylor bottle filling stations are certified for: NSF 42 NSF 53 NSF 372 (Lead Free) These filters are all certified to reduce Chlorine, Particulate class 1, and Lead. In addition, they are made to improve Taste, Odor, and Clarity. Filter life span: For 51300C & 55898C filters (BOTTLE FILLERS) 3000 GAL capacity, or 1 year in use...whichever comes first Assuming a 20oz water bottle: 19,200 total refills 55 refills/day for filter to last 1 year **For schools: this is closer to 100 refills/day given that they have about 200 days of school each year For 51299C filters (DRINKING FOUNTAINS & WATER COOLERS) 1500 GAL capacity, or 1 year in use...whichever comes first Assuming a 20oz water bottle: 9,600 total refills 56 refills/day for filter to last 6 months **For schools: this is closer to 100 refills/day given that they have about 200 days of school each year For ECF750 filters (Liv Residential units) 750 GAL capacity, or 1 year in use...whichever comes first Assuming a 20oz water bottle: 4,800 total refills 28 refills/day for filter to last 6 months For ECF3000 filters (Liv Residential units) 3000 GAL capacity, or 1 year in use...whichever comes first Assuming a 20oz water bottle: 19,200 total refills 55 refills/day for filter to last 1 year **All refill numbers in this section are approximate, and will differ per situation. Most units are equipped with a filter status light that will let you know when to change the filter. Do not go past the one-year expiration date in the case of light usage. How to change the Filter: See our collection of filter maintenance videos on ourInfoHub. You can also see our blog article locatedhere. Common Troubleshooting: How do I fix the flashing red light? A) If you've already gone through the steps in the video and the article, and the red light is still flashing, first make sure that the label is facing out on the filter. You should be able to read the label while kneeling in front of the machine. B) On the back side of the filter, is there a white, circular sticker? If there is not a white, circular sticker then the wrong filter is installed. C) Is there a wiring harness with 6 different colored wires plugged into the right hand side of the sensor board, which is located on the back side of the filter bracket? D) The harness (6 different colored wires) that is plugged into the filter sensor board, is it banded up with a rubber band or zip tie? If so, try to remove the band and straighten that harness out as best you can. E) If problems still persist after completing all of these steps, clickhere to submit a service request, and someone will respond to you within a couple business hours.